



Yellowfin

Making Business
Intelligence Easy

Release Notes

Yellowfin 6

December 2011

Highlights

Upgraded Interface



Navigation

The Dashboard Menu bar now includes an enhanced Administration Dropdown, providing the user with shortcuts to the most commonly used functionality. The Inbox has also been moved to the Dashboard Menu in order to bring new notifications to the user's attention. The Report Builder Menu bar has also been refined, with new, more logical menu groupings.

Redesigned Report Search

The Report Search popup, used on the dashboard, has been removed and replaced with an improved mini Report List built into pages such as the Dashboard (when a tab is in draft mode), Related Reports page, and the Report Builder. This new Report Search provides the user with all the functionality of the Report List page; advanced search options, chart thumbnails, and report details.

Related Reports

The Related Reports page in the Report Builder has been redesigned in Yellowfin 6. Users are now able to set up multiple relationships on the one page, using a simplified drag and drop system. The inclusion of the new and improved report search with thumbnail previews greatly aids the user through the process.

Upgraded Dashboard Functionality

The Dashboard has had several additions to its functionality. Standard and Analytic tabs are now one in the same, allowing for all tabs that do not contain KPI Reports to make use of the analytic filters.

Analytic Filters are now able to be grouped on the dashboard. This firstly allows a large range of filters to be collapsed into relevant groupings, and secondly improves dashboard load times, as filter values are not loaded until their group is expanded.

Series Selection on the dashboard has also been enhanced. You are now able to link series, as you have previously been able to link filters. This enables the user to design a set of reports to investigate metrics by different categories, displaying one metric at a time across the range of reports.

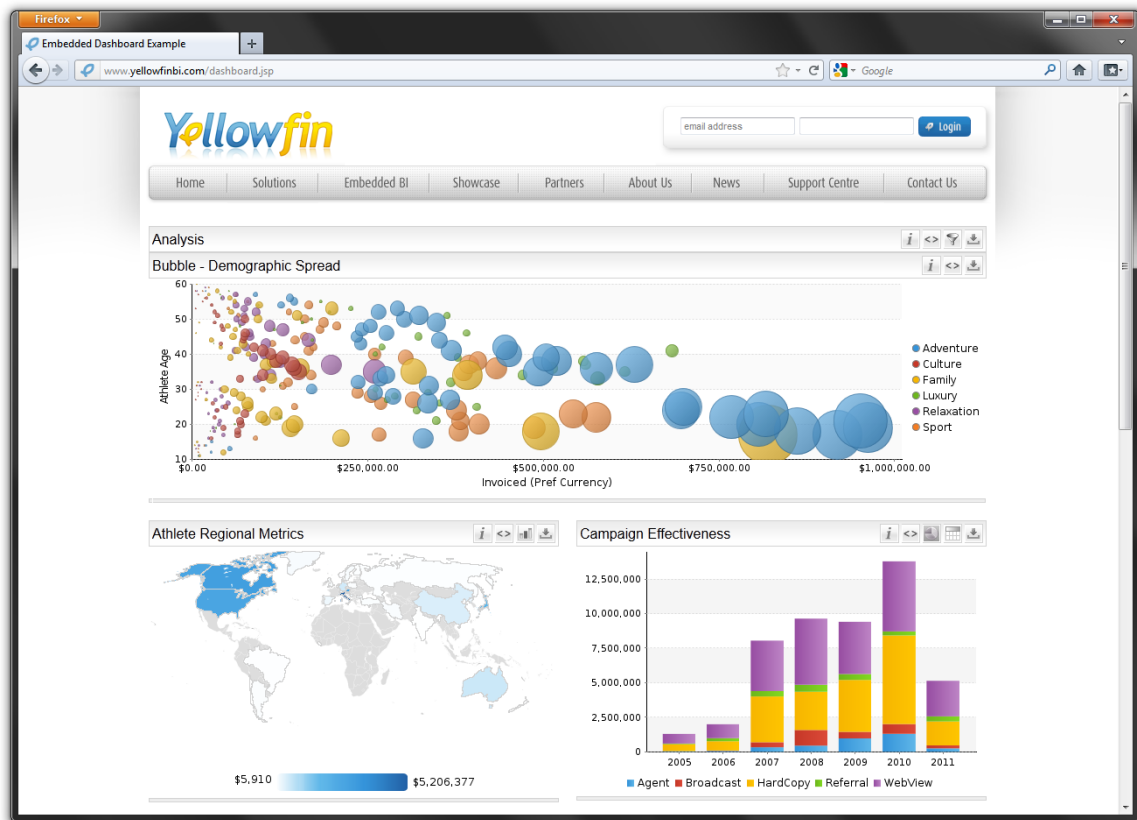
Report Previews

Yellowfin 6 has incorporated a range of previews into the existing functionality.

- **Report Thumbnails:** the Report List and Report Search contain a thumbnail image of each report, to make identifying content easier. These thumbnails are generated the first time a report is run.
- **Time Slider:** the time slider on time series charts now contains a preview of the trend line so as you adjust the date range displayed, you can see what data you will be zooming in on.
- **Series Selection:** series selection on time series charts has been enhanced so that a preview of each metric's trend line is shown, as well as some key figures.

Embedded Dashboards

Yellowfin 6 has expanded on previous embedding functionality. Where users were previously able to embed a single report in an external webpage, now entire dashboards may be displayed.



Data Analysis

Multi Drill Through

When setting up drill through relationships on a report the user is now able to set up drills to multiple reports, using the same hyperlink field. This will allow the consumer to select which detail they wish to view, rather than being restricted to one option.

Drill Anywhere

With Drill Anywhere enabled, the user is now able to click on an enabled field and select from a list of available dimensions to drill to, rather than having to use a predefined drill down hierarchy. This allows for far greater flexibility when slicing and dicing data.

Native iPad Application

User Interface

A completely restyled UI makes full use of the iPad's functionality, including multi-touch gestures and the large screen real estate.

Dashboards

Users are now able to browse a list of dashboards available to them, choosing to load individual reports or an entire tab to view at once. The dashboard list contains thumbnails of each report, to aid the user in locating reports.



Collaboration

The new iPad fully integrates with comments, inbox, and emails set up in the full web application.

Offline Mode

The introduction of an offline mode to the iPad app provides the user with the option to store results on their mobile device. Offline mode can be configured by administrators of the web application.

Enhancements & Improvements Overview

User Interface	
Navigation	Enhanced Menu Bars throughout the system provide users with simpler navigation options. The Report Builder menus have been grouped into more logical sets, aiding the user, and the Dashboard Menu now has an Administration drop down providing shortcuts to commonly used functions.
Inbox	The Yellowfin Inbox simplifies information management and provides users with a central location in the Dashboard Menu bar to manage approval, comment, and report notifications.
Report Search	The Report Search popup has been replaced with an inbuilt report list, containing chart thumbnail displayed and advanced search options, mirroring those used in the Report List page.
Report Preview - Thumbnails	The Report List and Report Search functions now contain thumbnail images of each report, making the identification of content simpler.
Report Preview – Time Slider	The Time Slider function on time series charts now contains a preview of the main series trend. This means that as the user is adjusting the date range displayed, they are able to see what they are zooming in on.
Report Preview – Series Selection	When Series Selection is displayed in a panel format on time series chart, the user is now presented with an overview of each series' trend, similar to the time slider display.
Analysis	
Dashboard Tabs	Standard tabs now allow users to add filters, eliminating the need for the additional Analytic Tab type.
Dashboard – Grouped Filters	Filters on the dashboard are now able to be grouped into

	collapsible sets, aiding those who have large lists of filters required for each tab.
Dashboard – Series Selection	Charts with Series Selection enabled are now able to be linked on the dashboard, providing similar relationships to those seen between analytic filters. The user simply selects the required series on one chart, and the others are updated to match.
Dashboard – KPI	KPI reports on the dashboard have been enhanced, now displaying a tooltip on the bullet chart (% of total). The variance calculation has also been enhanced to take into account the desired trend option (up or down).
Related Reports	The Related Reports page has been redesigned to allow an overview of all report relationships at once, and the setup of each to be completed on one page. The interface includes a simplified drag and drop function, similar to that used to add reports to dashboard tabs.
Drill – Multi Drill Through	Set up links to multiple child reports on one hyperlink field.
Drill – Drill Anywhere	Drill down to a range of enabled drill anywhere dimensions without the use of a predefined hierarchy.
Cross Tab – Sort by Metric Total	Users can now sort metrics on a cross-tab by the total of the column or row value for easy trend identification.
iPad app	
Restyled User Interface	Yellowfin for the iPad supports the iPad's native multi-touch interface and has been engineered to take full advantage of the iPad's large screen. Users can see all their reports in one place. View favourites and dashboard tabs at a glance and swipe across the screen to find the information you want. View reports, toggle between chart and table mode, or initiate action with a single touch.
Dashboards	Users are now able to browse a list of dashboards available to them, choosing to load individual reports or an entire tab to

	view at once. The dashboard list contains thumbnails of each report, to aid the user in locating reports.
Collaboration	Fully integrated with the comments, inbox, and emails set up in the full web application.
Subscriptions	Users can keep abreast of new trends and developments by subscribing to reports and setting alerts. Saving reports as favourites makes it easy to stay up-to-date.
Filters & Drill	Quickly apply filters to reports for the data required to answer pressing questions fast. Users can also drill down or through their data to uncover underlying trends and detailed facts.
Offline Mode	The introduction of an offline mode to the iPad app provides the user with the option to store results on their mobile device. Offline mode can be configured by administrators of the web application.
Inbox	The Yellowfin Inbox simplifies information management and provides users with a central location to manage approval, comment, and report notifications.
Data Sorting	Quickly sort data by ascending or descending order to identify outliers, patterns and actionable information.
Series Selection	Series selection allows users to dynamically change the metric or metrics that are being displayed on a chart, allowing easier interpretation of charts that are crowded or have different scales.
Section Reports	Section reports allow users to split-up a report into multiple sections to make it easier to compare categorical information, i.e. to compare sales by region.
Miscellaneous	
Embedded Dashboards	With Yellowfin 6, users can embed fully interactive dashboards wherever they are needed for decision-making. Users simply

	copy and paste a YouTube-style piece of script into third party platforms and applications, such as a wiki, blog or web page.
Dashboard Report Load Shading	Users now have the option to remove the loading message when refreshing a dashboard report.
Filter Omit - Removed	The omit button has been removed in Yellowfin 6. Users no longer have to actively choose to omit a filter, simply leave a text box empty to omit a filter.
Custom Filter Period	This feature allows users to select a period from a predefined list as well as enter their own custom date range.
Web Services	Many functions have been added to the existing Web Service infrastructure in Yellowfin 6. This includes more formatting options, Time Sliders and Series Selection widgets. Inbox notifications can also be retrieved via Web Services.
Heat Map Zoom	Users are now able zoom in and out on heat maps by using the scroll wheel on their mouse.
View Level Enhancements	<p>Yellowfin 6 view level improvements also make report building and data analysis faster and easier for end-users.</p> <p>Users are able to assign aliases to tables used in the view builder, even once they are being used by reports.</p>